

# MILSPRAY®

Corrosion Technologies

# TOUGH COAT™

**Military Grade Bed Liners, Undercarriage Coatings, and Special Effects**

MILSPRAY® provides commercial Bed Liner and Undercarriage Coating services. Our Bed Liner, Tough Coat™ is a lightweight, nearly indestructible, military grade, integrated polyurea coating system that provides the ultimate in water repellent technology and enhanced corrosion protection. More than "just a bedliner," Tough Coat™ can also be applied to high wear areas, bumpers, rail guards and plow blades, providing enhanced protection in these areas as well.

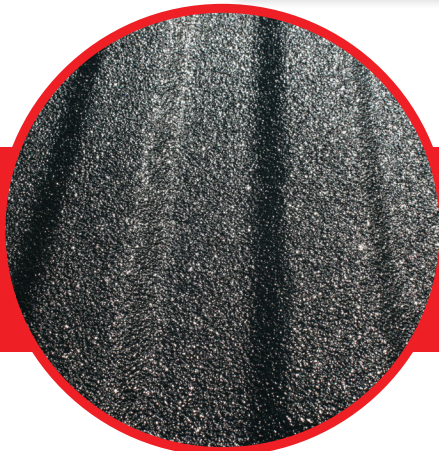
Our technicians are highly trained and specialize in surface preparation, equipment usage, and proper spray techniques. We take no short cuts!



**AVAILABLE IN**

• Black • Light Gray • Green • Neutral • Red • Safety Yellow  
• Medium Gray • Sand • White • Manila • Blue

**CUSTOM COLORS AVAILABLE**



**Bed Liners**

The ONLY Bed Liner coating approved and used by the United States Marine Corps. It provides enhanced corrosion protection and repels water.



**Special Effects**

Custom high performance coatings and colors for bumpers, vehicles interiors, wheel wells, rocker panels, and more.



**Tectyl® Undercarriage Coatings**

Our Undercarriage Coatings provide protection against Sand, Salt, Moisture, Flying Rocks, and Debris. It also creates a Watertight seal that resists corrosion and rust.



# Our Work

Before



Bed Liners

After



Before



Jeeps

After



Before



Undercarriage

After



## Technical Data

### MILSPRAY® Tough Coat™

### Top Competitors Material

Tensile Strength.....2800 PSI	Tensile Strength..... 1800 PSI
Elongation.....360%	Elongation..... 350%
Modulus 200%.....1620 PSI	Modulus 200%..... 750 PSI
Modulus 300%.....1925 PSI	Modulus 300%..... N/A PSI